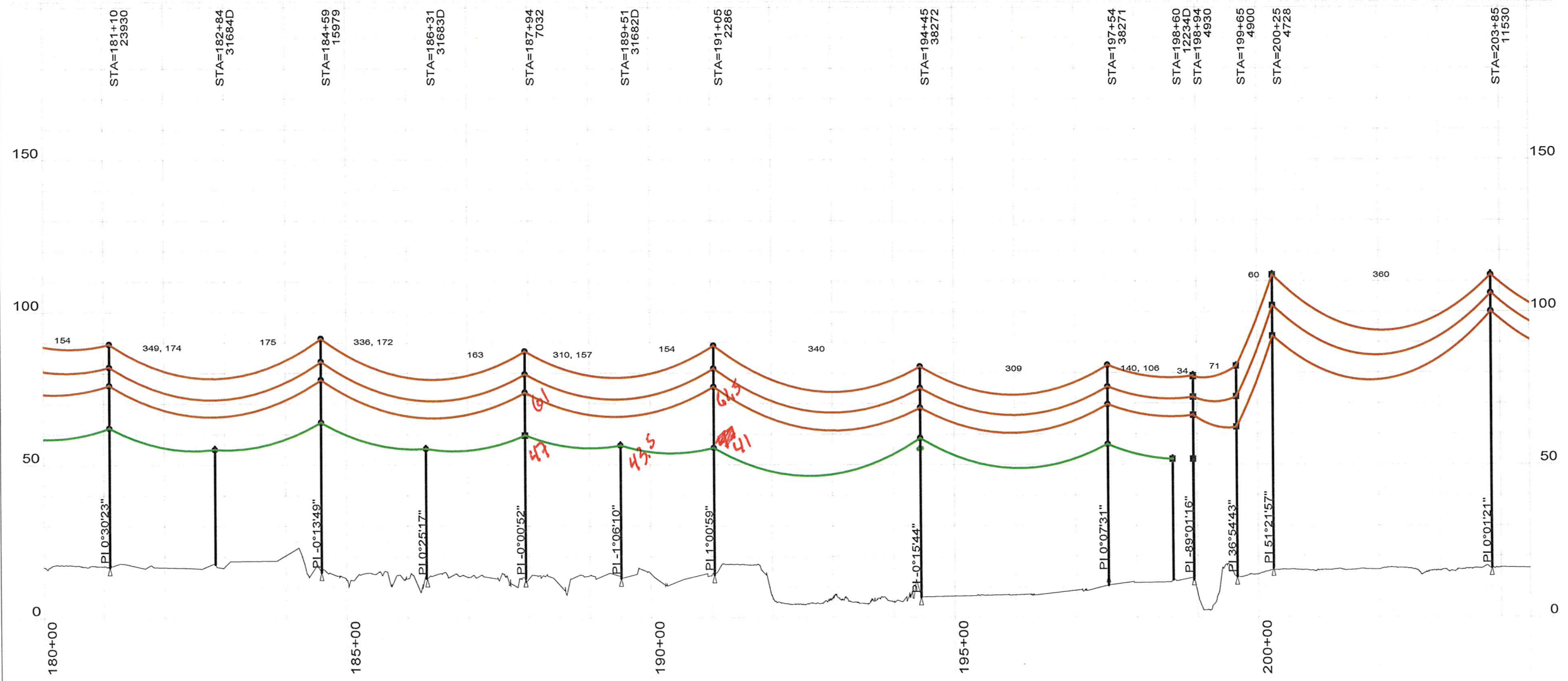


- PLAN VIEW LEGEND:**
- 115KV TRANSMISSION
  - 3 PHASE DISTRIBUTION
  - - - 1 OR 2 PHASE DISTRIBUTION
  - SERVICE WIRE
  - COMMUNICATION
  - OTHERS AS NOTED

- PROFILE VIEW LEGEND:**
- DEADEND IN TRANSMISSION ONLY
  - TANGENT

31685 - 4930, RULING SPAN 309 (FT), TENSION 2051 (LBS) AT 70 (DEG F) CREEP  
 31685 - 4930, RULING SPAN 309 (FT), TENSION 2228 (LBS) AT 70 (DEG F) CREEP  
 31685 - 4930, RULING SPAN 309 (FT), TENSION 2384 (LBS) AT 70 (DEG F) CREEP  
 31685 - 7032, RULING SPAN 168 (FT), TENSION 491 (LBS) AT 60 (DEG F) CREEP  
 31685 - 7032, RULING SPAN 168 (FT), TENSION 491 (LBS) AT 60 (DEG F) CREEP  
 7032 - 12234D, RULING SPAN 269 (FT), TENSION 491 (LBS) AT 60 (DEG F) CREEP  
 4930 - 4900, RULING SPAN 71 (FT), TENSION 1194 (LBS) AT 70 (DEG F) CREEP  
 4900 - 4728, RULING SPAN 54 (FT), TENSION 1194 (LBS) AT 70 (DEG F) CREEP  
 4900 - 4728, RULING SPAN 54 (FT), TENSION 1194 (LBS) AT 70 (DEG F) CREEP  
 4728 - 4696, RULING SPAN 330 (FT), TENSION 1194 (LBS) AT 70 (DEG F) CREEP



- NOTES:**
1. ORIGINAL PLS CADD MODEL CREATED BY ENGINEERING CONSULTANT. SUBSEQUENT LINE UPRATING PROJECT COMPLETED BY TACOMA POWER PRIOR TO ISSUANCE OF THIS DRAWING.
  2. 115KV CONDUCTOR IS 1272 AAC, NARCISSUS DISPLAYED AT 167 DEGREES F UNLESS OTHERWISE NOTED.
  3. SPAN NOTES LISTED ABOVE, PROVIDE TENSIONS FOR THE CALCULATED CONDUCTOR TEMPERATURE AT TIME OF SURVEY.
  4. FACILITY LOCATIONS AND ELEVATIONS PROVIDED BY LIDAR SURVEY.
  5. DISTRIBUTION CONDUCTORS DISPLAYED AS SURVEYED FOR VISUAL REFERENCE ONLY.

200.0 FT. ——— HORIZ. SCALE  
 40.0 FT. ——— VERT. SCALE

NO.	DATE	REVISION	BY	CHECKED
1	1/15/14	UPRATE/AS BUILT	MAC	MLV
CITY OF TACOMA				
DEPARTMENT OF PUBLIC UTILITIES				
NORTHEAST-NISQUALLY 115KV				
NORTHEAST-NISQUALLY				
SUBMITTED		DESIGNED	DRAWN	CHECKED
APPROVED		DATE	SCALE	
		01/15/14	AS SHOWN	
		DRAWING NO.	DS1042	
		SHEET 10 OF 11		